



In-line chemical seal RD 80 intermediate flange version



Benefits

- Easy intermediate flange installation in the pipe
- Various nominal sizes
- Various nominal pressures
- Special materials (option)

Application

For use with Bourdon tube pressure gauges, pressure transducers or pressure switches. For flowing, corrosive and highly viscous media, for direct installation in pipes.

Versions

intermediate flange version for flanges according to ASME B 16.5

Process connection	Instrument connection	Nominal pressure	Minimum range* (in bar) at nominal size				Part no.
			63	100	160	DMU	
DN 1"	G½ female thread	CL 150-6.000	1.6 bar	2.5 bar	–	1.6 bar	31360
DN 1½"	G½ female thread	CL 150-6.000	1.6 bar	2.5 bar	4 bar	1.6 bar	31361
DN 2"	G½ female thread	CL 150-6.000	1.6 bar	2.5 bar	2.5 bar	1 bar	31362
DN 3"	G½ female thread	CL 150-6.000	1.6 bar	2.5 bar	2.5 bar	1 bar	31363
DN 4"	G½ female thread	CL 150-6.000	1.6 bar	2.5 bar	2.5 bar	1 bar	31364



Blue part no. = in-stock items



intermediate flange version for flanges as per EN 1092-1 type B 2

Process connection	Instrument connection	Nominal pressure	Minimum range* (in bar) at nominal size				Part no.
			63	100	160	DMU	
DN 25	G½ female thread	PN 4-400	1.6 bar	2.5 bar	–	1.6 bar	31355
DN 40	G½ female thread	PN 4-400	1.6 bar	2.5 bar	4 bar	1.6 bar	31356
DN 50	G½ female thread	PN 4-400	1.6 bar	2.5 bar	2.5 bar	1 bar	31357
DN 65	G½ female thread	PN 4-400	1.6 bar	2.5 bar	2.5 bar	1 bar	31956
DN 80	G½ female thread	PN 4-400	1.6 bar	2.5 bar	2.5 bar	1 bar	31358



Blue part no. = in-stock items

Technical specifications

Process connection/tubus

Stainless steel 316 L

Intermediate flange version for flanges according to ASME B 16.5 or for flanges as per EN 1092-1 type B 2

Diaphragm

Stainless steel 316 L, welded to body, no dead space

Instrument connection

Stainless steel 316 L

G½ female thread

Pressure transmission liquid

Paraffin oil (FM 09)

Pressure range

See overview of versions

Nominal pressure

CL 150-6.000, PN 4-400

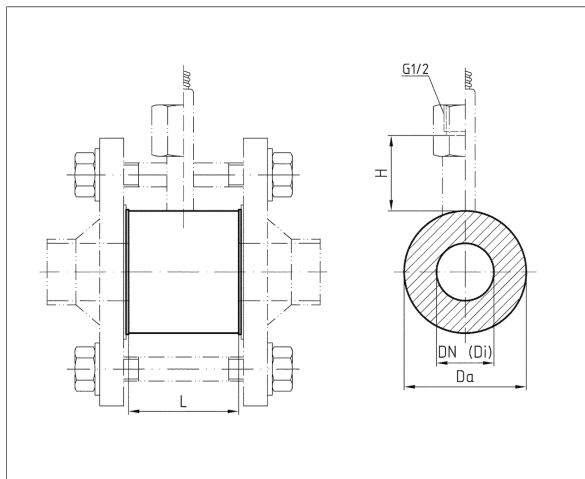
Options

- Coatings
- Cooling element (> 100 °C)
- Capillary tube
- Other filling liquids



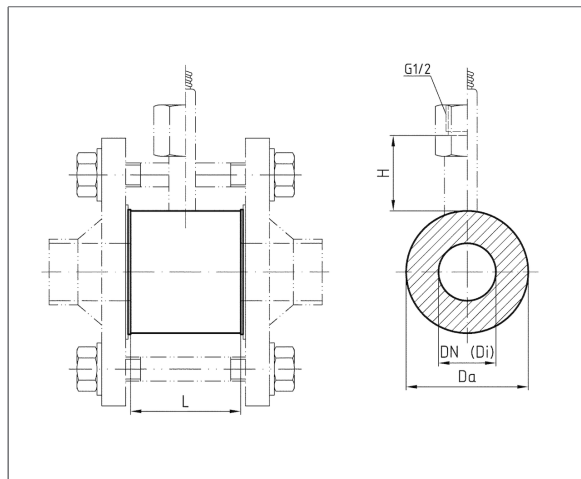
Technical drawings

intermediate flange version for flanges according to AS-
ME B 16.5



DN	Di	CL	Da	L	H
1"	28,5	150-6.000	50	100	29
1½"	43,1	150-6.000	73,2	100	29
2"	54,5	150-6.000	91,9	100	29
3"	82,5	150-6.000	127	60	29
4"	107,1	150-6.000	157,2	60	29

intermediate flange version for flanges as per EN 1092-1
type B 2



DN	Di	PN	Da	L	H
25	28,5	4-400	68	100	29
40	43,1	4-400	88	100	29
50	54,5	4-400	100	100	29
65	70,3	4-400	120	100	29
80	82,5	4-400	138	60	29